



Linear Motion Systems

New! RediMount™ motor mounting adapter kit available as standard

THOMSON[®]
Linear Motion. Optimized.™

www.thomsonlinear.com



*Linear Motion. **Optimized.***

Thomson - the Choice for Optimized Motion Solutions

Often the ideal design solution is not about finding the fastest, sturdiest, most accurate or even the least expensive option. Rather, the ideal solution is the optimal balance of performance, life and cost.

Quickly Configure the Optimal Mechanical Motion Solution

Thomson has several advantages that makes us the supplier of choice for motion control technology.

- Thomson owns the broadest standard product offering of mechanical motion technologies in the industry.
- Modified versions of standard product or white sheet design solutions are routine for us.
- Choose Thomson and gain access to over 70 years of global application experience in industries including packaging, factory automation, material handling, medical, clean energy, printing, automotive, machine tool, aerospace and defense.
- As part of Fortive Corporation, we are financially strong and unique in our ability to bring together control, drive, motor, power transmission and precision linear motion technologies.

A Name You Can Trust

A wealth of product and application information as well as 3D models, software tools, our distributor locator and global contact information is available at www.thomsonlinear.com/contact_us. Talk to us early in the design process to see how Thomson can help identify the optimal balance of performance, life and cost for your next application. And, call us or any of our 2000+ distribution partners around the world for fast delivery of replacement parts.

Local Support Around the Globe





Thomson Linear Motion Systems

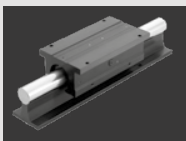
The optimal balance of performance, life and cost

Thomson has one of the most competitive and comprehensive product portfolios available today. The range covers the smallest and most compact linear motion systems to the biggest and most robust. Our wide range of guide and drive systems can be configured economically and work in harsh environments, at high speeds, and in high-precision applications.



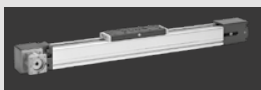
1969

Shaft Rail Assemblies of model 1CA/1CB released



1981

Wiesel – the world's first true linear motion system presented



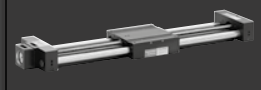
1982

First generation Movopart (M90/M140) linear motion systems released



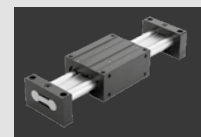
1988

Release of the Dual Shaft Rail Assemblies (2DB/2EB) family



1990

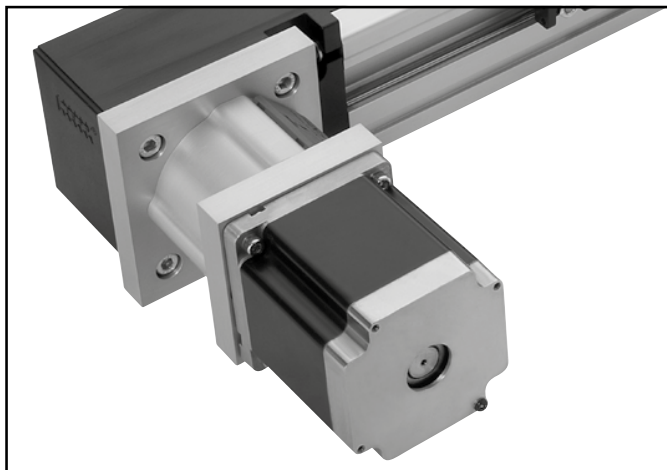
Release of the Twin Shaft Web (2CA/2CB) range



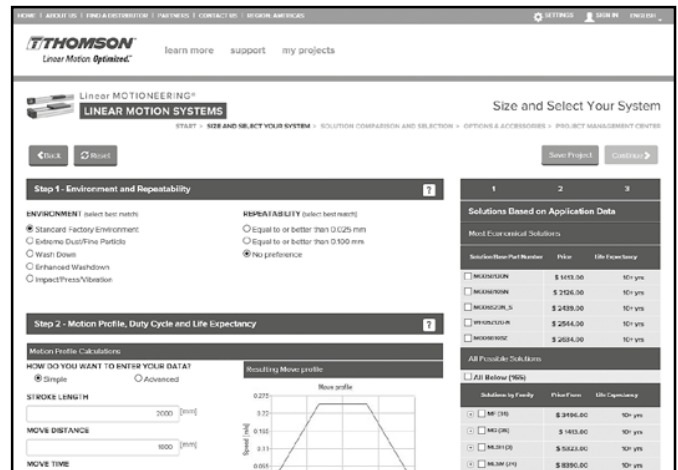
Thomson Linear Motion Systems

The optimal balance of performance, life and cost

Thomson has decades of innovation and application experience. A diverse offering of multiple linear motion system technologies enables Thomson to provide you with the optimal balance of performance versus installed cost for your application.



RediMount™ adapter kit as standard for quick and easy motor mounting



Linear Motioneering for quick and easy sizing and selection



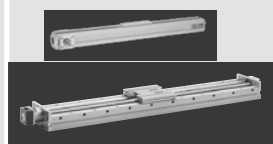
Tap into our vast application library



Thousands of successful applications all over the world

1995

Movopart M50 and the **2RB** range presented



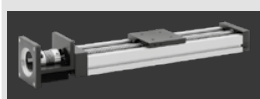
1997

Movopart generation two (**M75/M100**) and the **2HB** range released



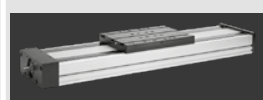
1998

Microstage miniature style linear motion systems released



2003

The **MLS** range of linear motion system presented



2018

RediMount™ as standard on all major Thomson linear motion system families

